

CTDSP1 Antibody (N-term)
Affinity Purified Rabbit Polyclonal Antibody (Pab)
Catalog # AP16726a

Specification

CTDSP1 Antibody (N-term) - Product Information

Application	WB,E
Primary Accession	O9GZU7
Other Accession	P58466 , NP_872580.1 , NP_067021.1
Reactivity	Human
Predicted	Mouse
Host	Rabbit
Clonality	Polyclonal
Isotype	Rabbit IgG
Calculated MW	29203
Antigen Region	1-30

CTDSP1 Antibody (N-term) - Additional Information

Gene ID 58190

Other Names

Carboxy-terminal domain RNA polymerase II polypeptide A small phosphatase 1, Nuclear LIM interactor-interacting factor 3, NLI-IF, NLI-interacting factor 3, Small C-terminal domain phosphatase 1, SCP1, Small CTD phosphatase 1, CTDSP1, NIF3, NLIIF, SCP1

Target/Specificity

This CTDSP1 antibody is generated from rabbits immunized with a KLH conjugated synthetic peptide between 1-30 amino acids from the N-terminal region of human CTDSP1.

Dilution

WB~~1:1000

E~~Use at an assay dependent concentration.

Format

Purified polyclonal antibody supplied in PBS with 0.09% (W/V) sodium azide. This antibody is purified through a protein A column, followed by peptide affinity purification.

Storage

Maintain refrigerated at 2-8°C for up to 2 weeks. For long term storage store at -20°C in small aliquots to prevent freeze-thaw cycles.

Precautions

CTDSP1 Antibody (N-term) is for research use only and not for use in diagnostic or therapeutic procedures.

CTDSP1 Antibody (N-term) - Protein Information

Name CTDSP1

Synonyms NIF3, NLIIF, SCP1

Function Preferentially catalyzes the dephosphorylation of 'Ser-5' within the tandem 7 residue repeats in the C-terminal domain (CTD) of the largest RNA polymerase II subunit POLR2A. Negatively regulates RNA polymerase II transcription, possibly by controlling the transition from initiation/capping to processive transcript elongation. Recruited by REST to neuronal genes that contain RE-1 elements, leading to neuronal gene silencing in non-neuronal cells.

Cellular Location

Nucleus. Note=Colocalizes with RNA polymerase II

Tissue Location

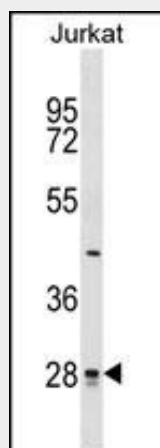
Expression is restricted to non-neuronal tissues. Highest expression in skeletal muscle, spleen, lung and placenta

CTDSP1 Antibody (N-term) - Protocols

Provided below are standard protocols that you may find useful for product applications.

- [Western Blot](#)
- [Blocking Peptides](#)
- [Dot Blot](#)
- [Immunohistochemistry](#)
- [Immunofluorescence](#)
- [Immunoprecipitation](#)
- [Flow Cytometry](#)
- [Cell Culture](#)

CTDSP1 Antibody (N-term) - Images



CTDSP1 Antibody (N-term) (Cat. #AP16726a) western blot analysis in Jurkat cell line lysates (35ug/lane). This demonstrates the CTDSP1 antibody detected the CTDSP1 protein (arrow).

CTDSP1 Antibody (N-term) - Background

Preferentially catalyzes the dephosphorylation of 'Ser-5' within the tandem 7 residues repeats in the C-terminal domain (CTD) of the largest RNA polymerase II subunit POLR2A. Negatively regulates RNA polymerase II transcription, possibly by controlling the transition from initiation/capping to

processive transcript elongation. Recruited by REST to neuronal genes that contain RE-1 elements, leading to neuronal gene silencing in non-neuronal cells.

CTDSP1 Antibody (N-term) - References

- Bailey, S.D., et al. Diabetes Care 33(10):2250-2253(2010)
Zhang, M., et al. Protein Sci. 19(5):974-986(2010)
Ji, H., et al. Plant J. 61(1):96-106(2010)
Talmud, P.J., et al. Am. J. Hum. Genet. 85(5):628-642(2009)
Sapkota, G., et al. J. Biol. Chem. 281(52):40412-40419(2006)